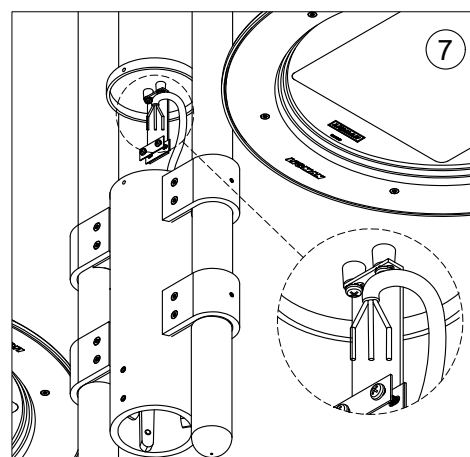
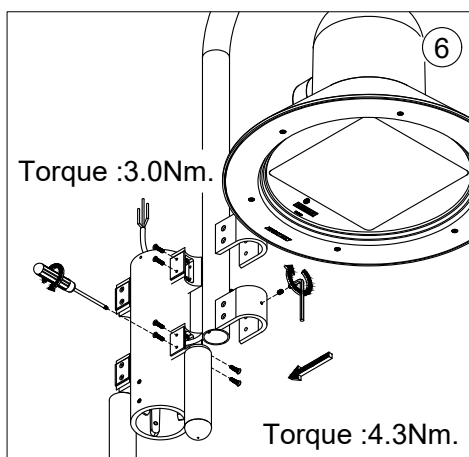
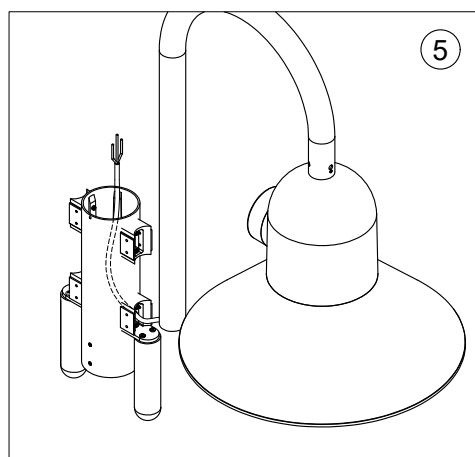
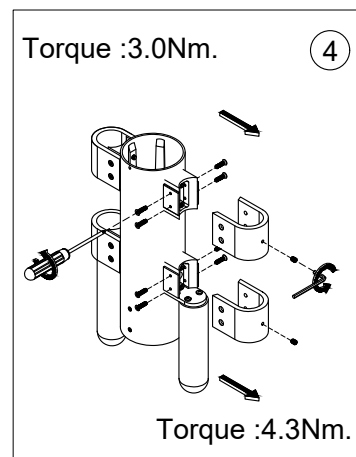
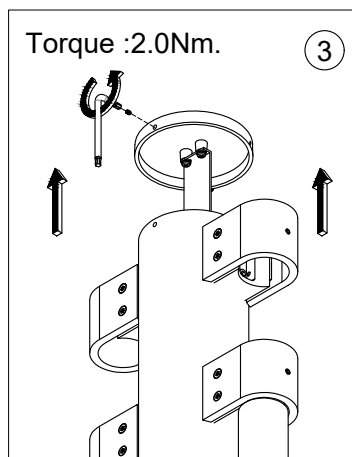
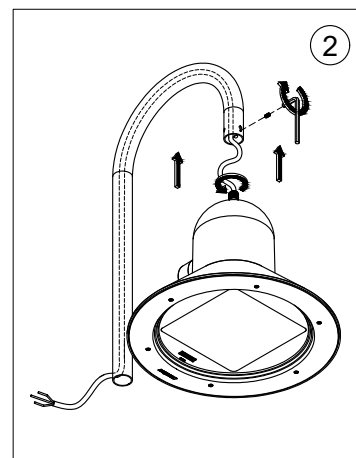
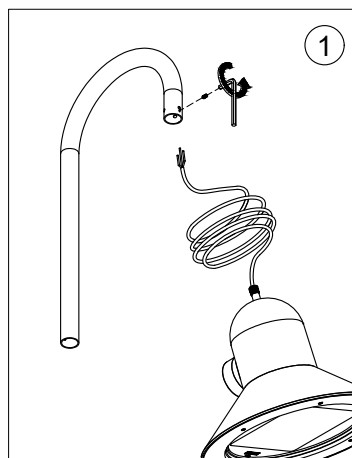
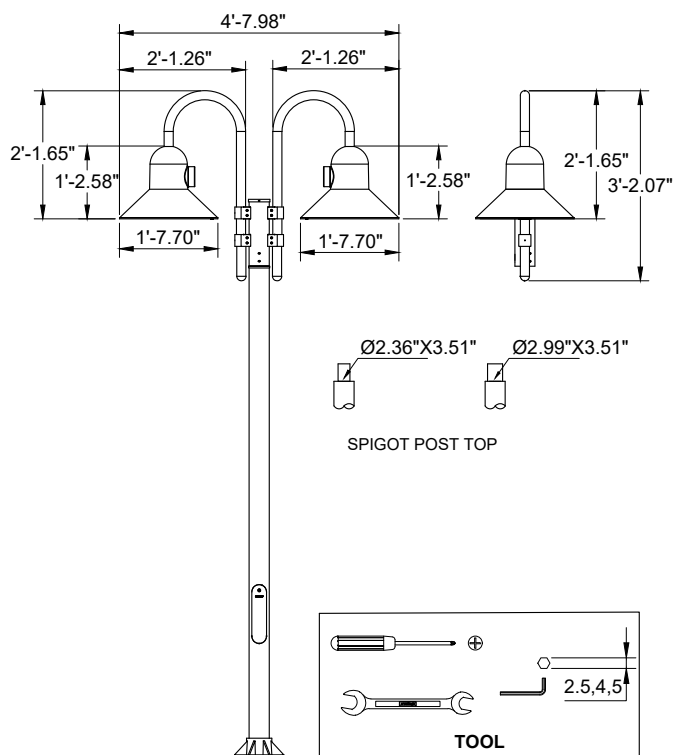


INSTALLATION AND SERVICE MANUAL

LIGMAN
NORTH AMERICA

For Installation of Hamilton Street and area lighting LED
Model. UHAM-20031, UHAM-20032.

Product drawing (dimensions)



- LIGMAN standard products are supplied with the control gear 24Vdc.
The control gear for other voltages and frequencies is available upon request, please consult us for more details.
 - LIGMAN luminaires are designed to conform IEC 60598 2-18 standard.
- Technical amendments and modifications techniques reserved.

Ligman Lighting USA

7144 NE Progress Court, Hillsboro
Oregon, 97124, USA
Tel : 503 645 0500 | Fax : 503 645 8100

